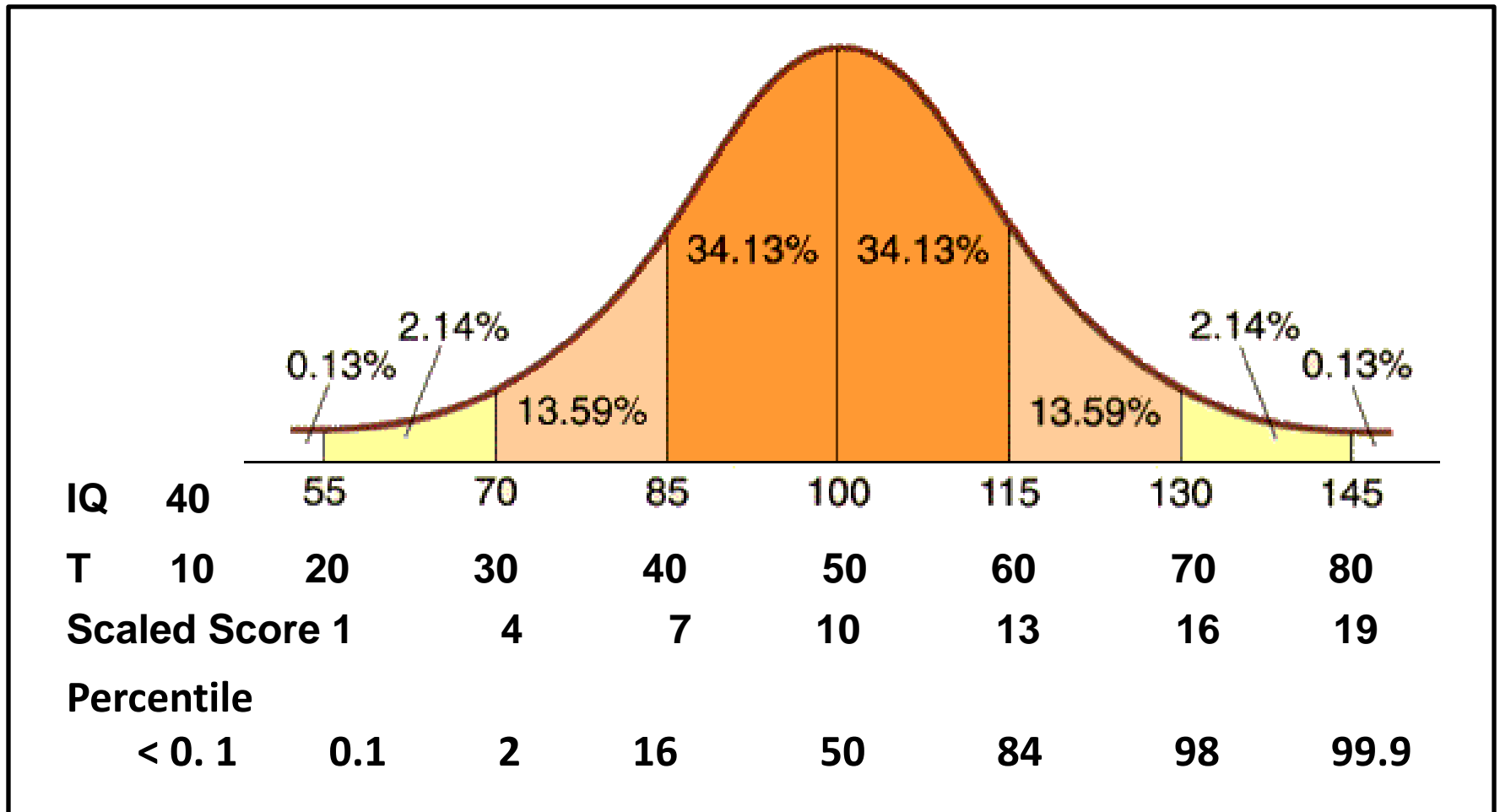
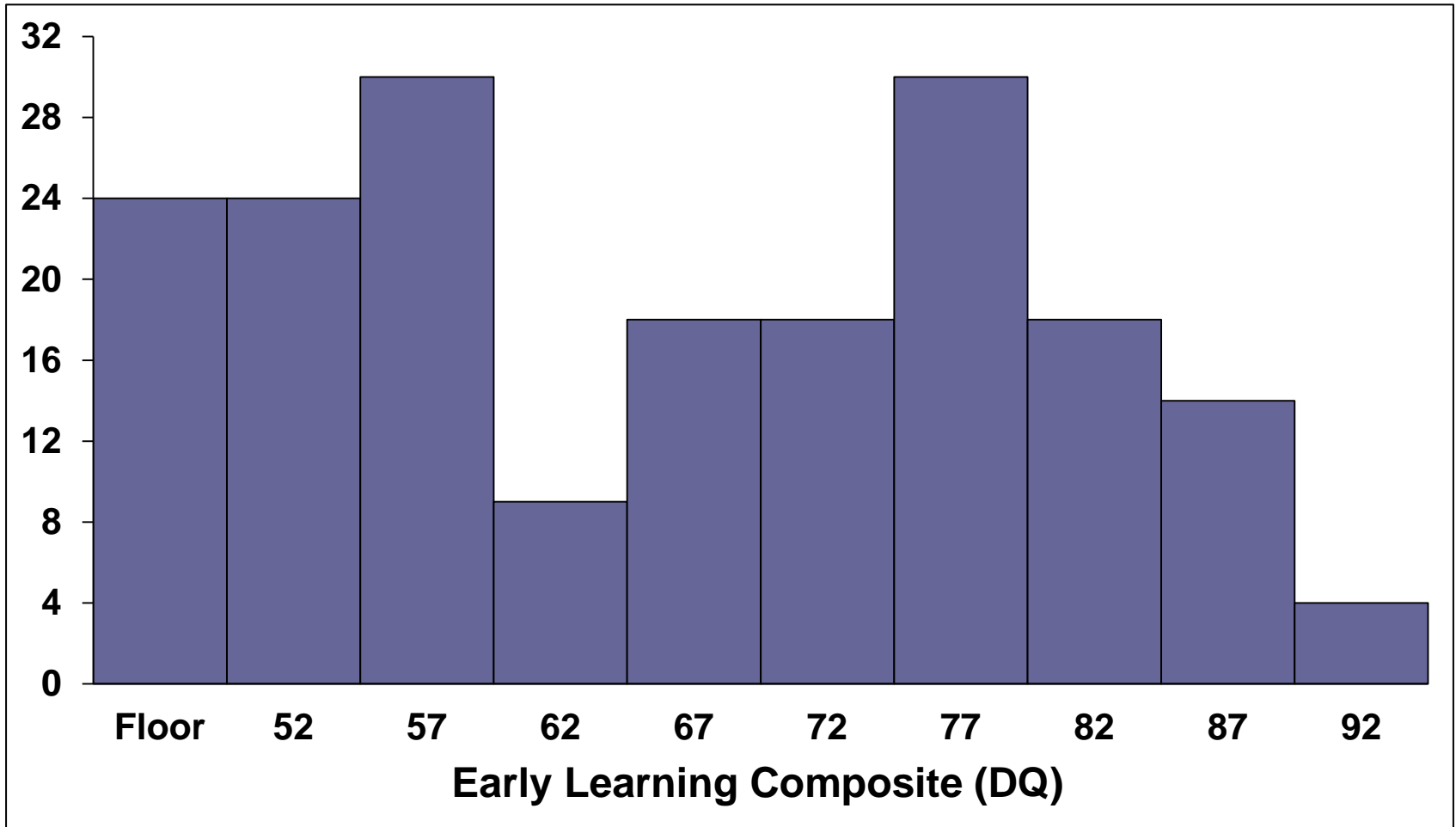


Scores on Intellectual Assessments

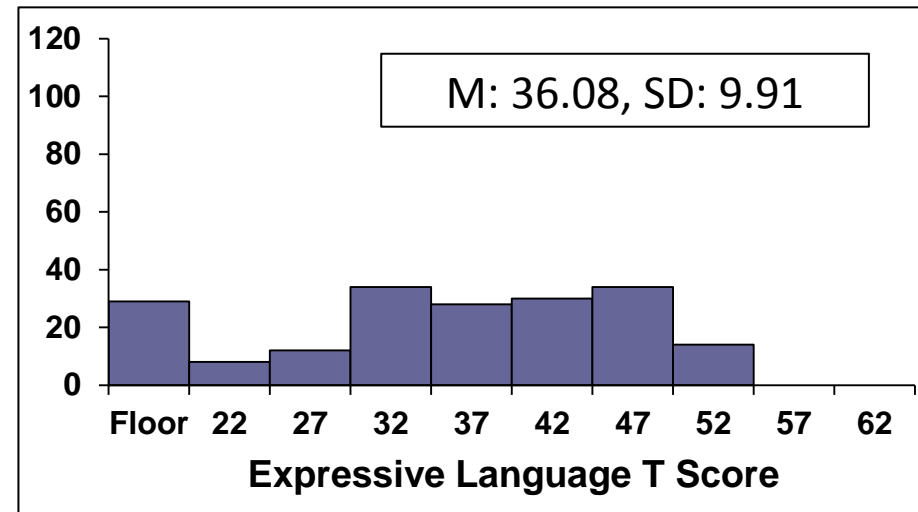
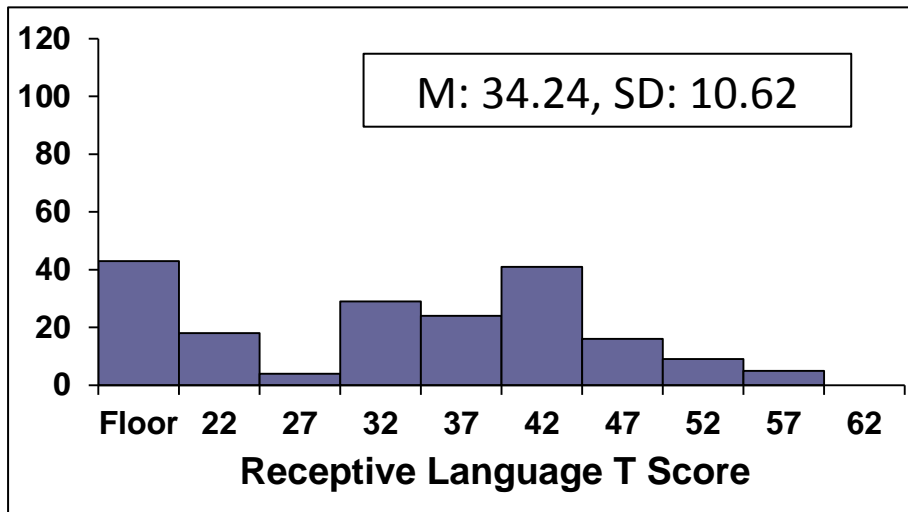
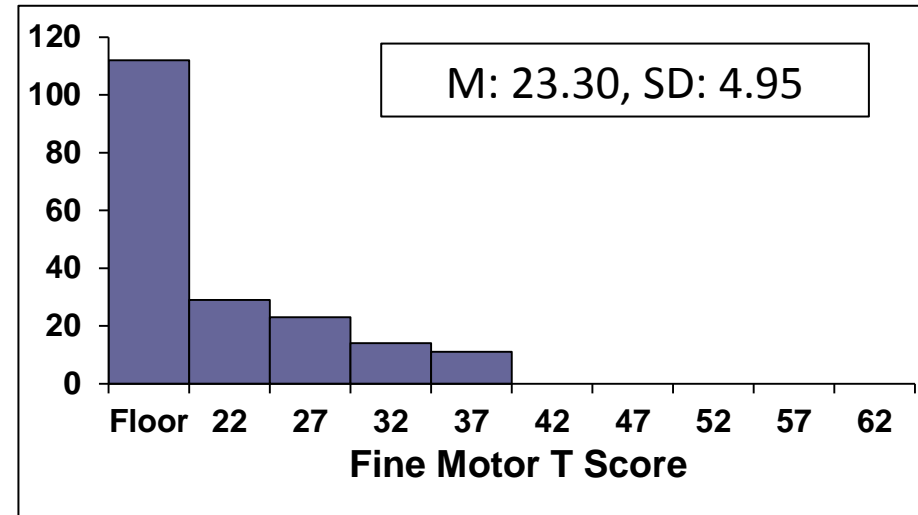
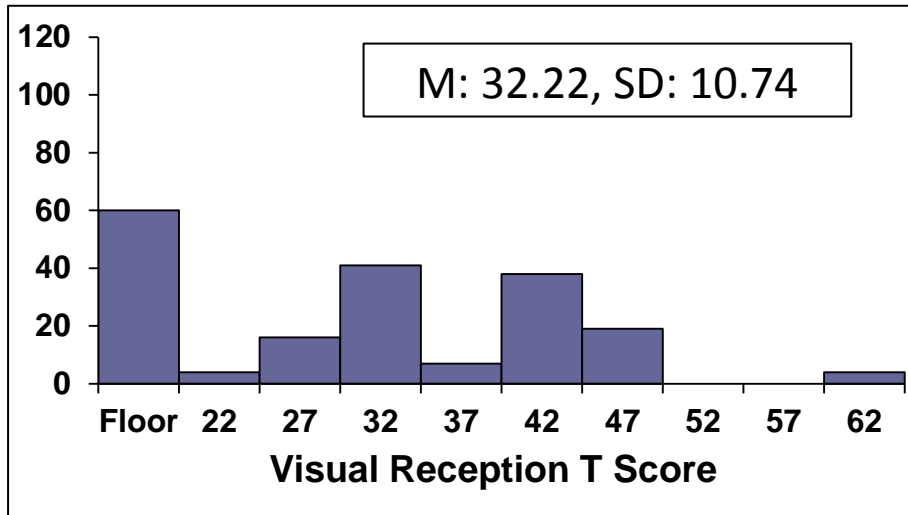


Mullen Scales of Early Learning: Early Learning Composite (DQ) (WS, Ages 18 – 48 months, N = 189)

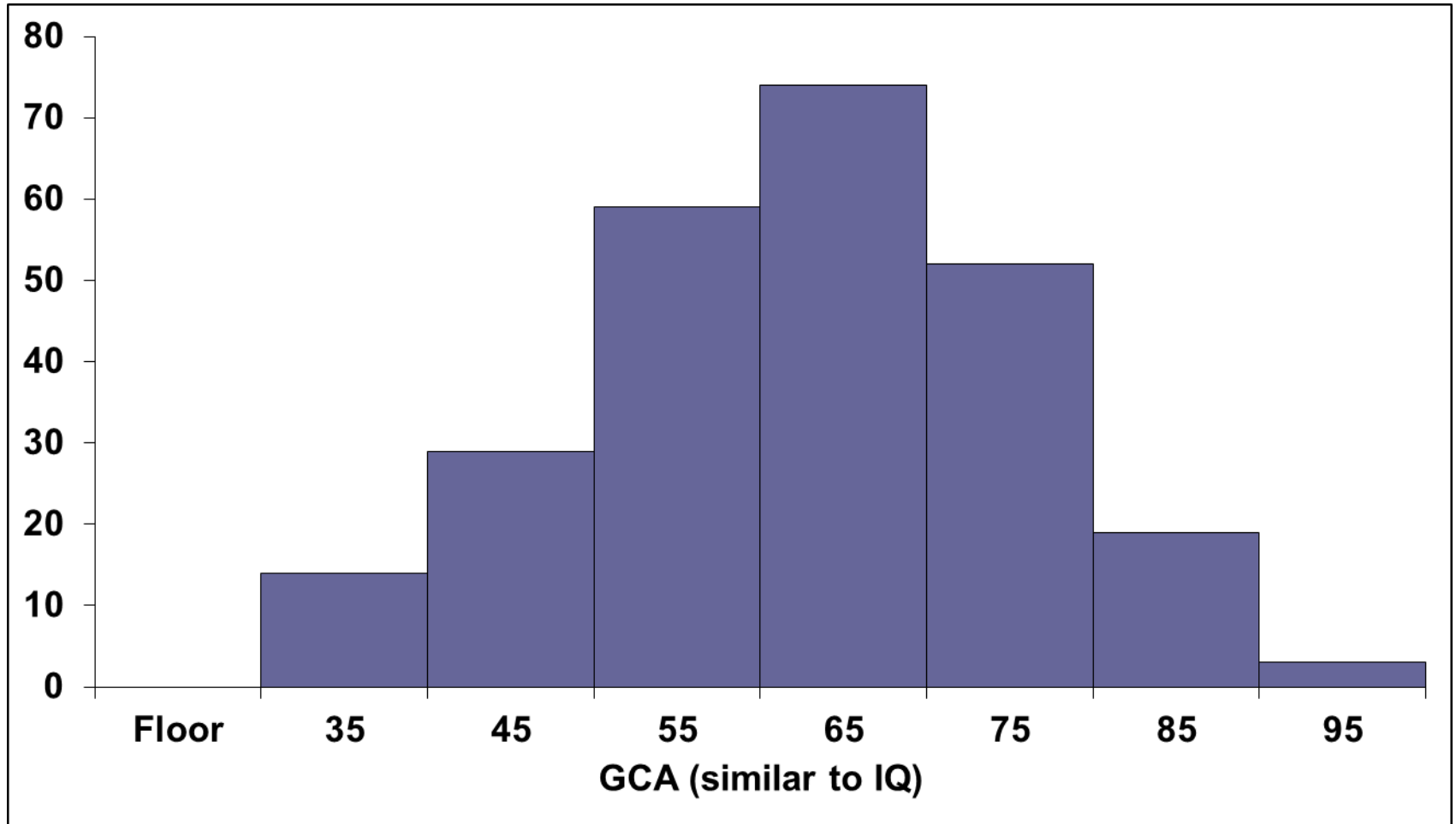


Mean: 66.58, SD: 12.91, Range: 49 (lowest possible) – 90

Mullen Scales of Early Learning: Scale T Scores (WS, Ages 18 – 48 months, N = 189)

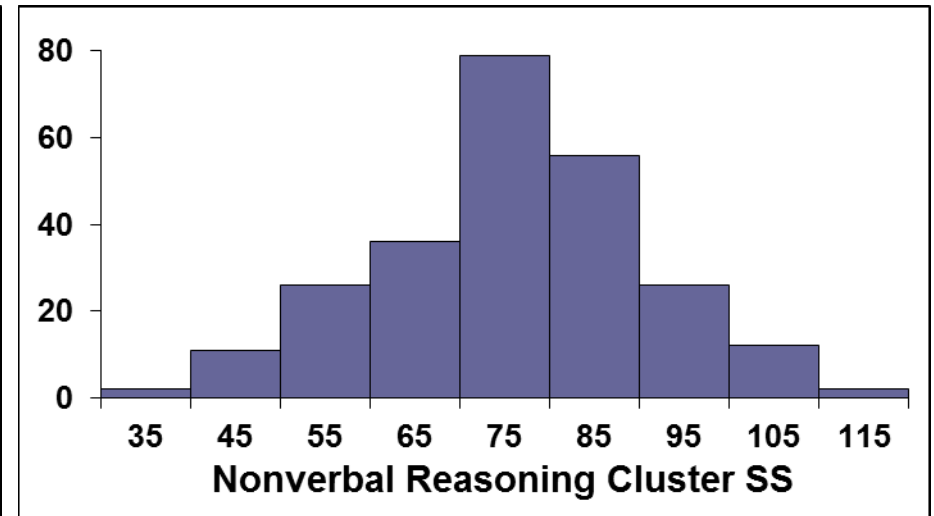
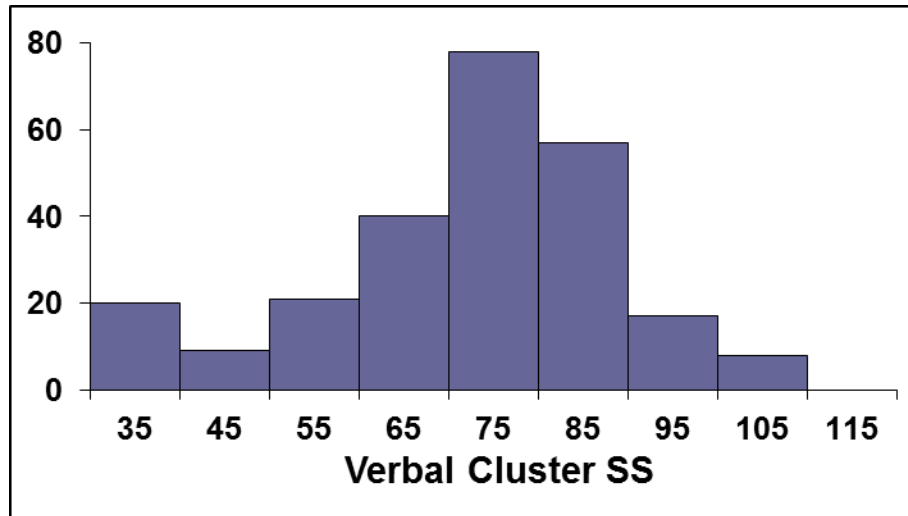


Differential Ability Scales-II GCA (“IQ”) (Ages 4 – 17 Years, $N = 250$)

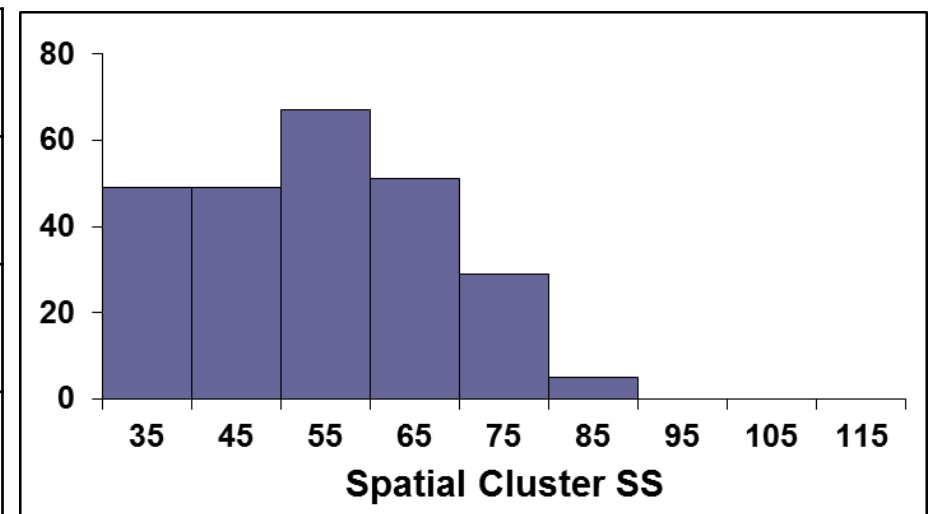


Mean: 62.31, SD: 12.97, Range: 31 – 96

DAS-II Core Cluster Standard Scores (Ages 4 – 17 Years, $N = 250$)

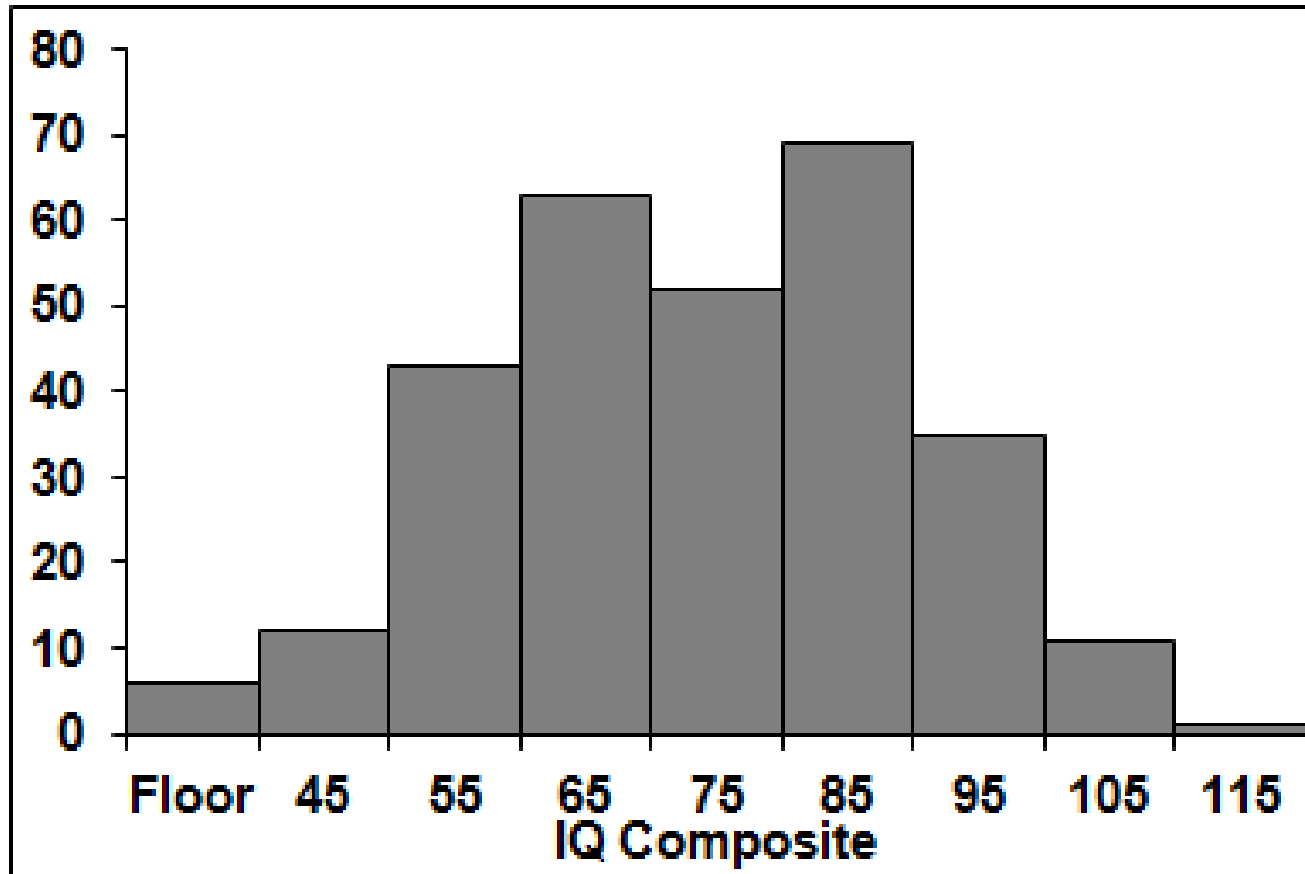


Cluster Standard Score	Mean (SD, Range)
Verbal	71.40 (16.68, 30 – 106)
Nonverbal Reasoning	75.64 (14.98, 37 – 118)
Spatial	53.35 (13.32, 32 – 86)



Kaufman Brief Intelligence Test – 2

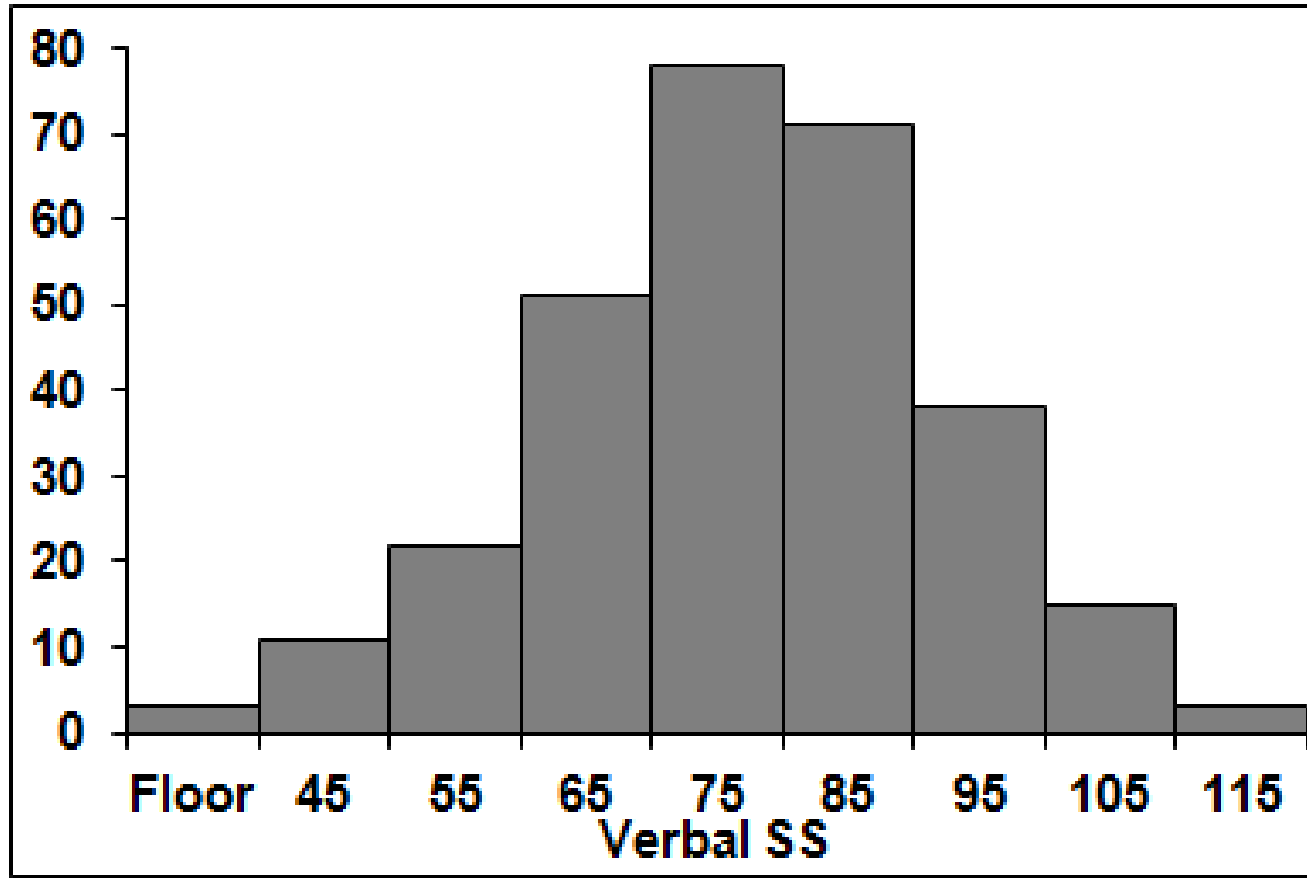
IQ Composite (Ages 4 – 17 years, N = 292)



Mean: 73.50, SD: 15.44, Range: 40 – 111

Kaufman Brief Intelligence Test – 2

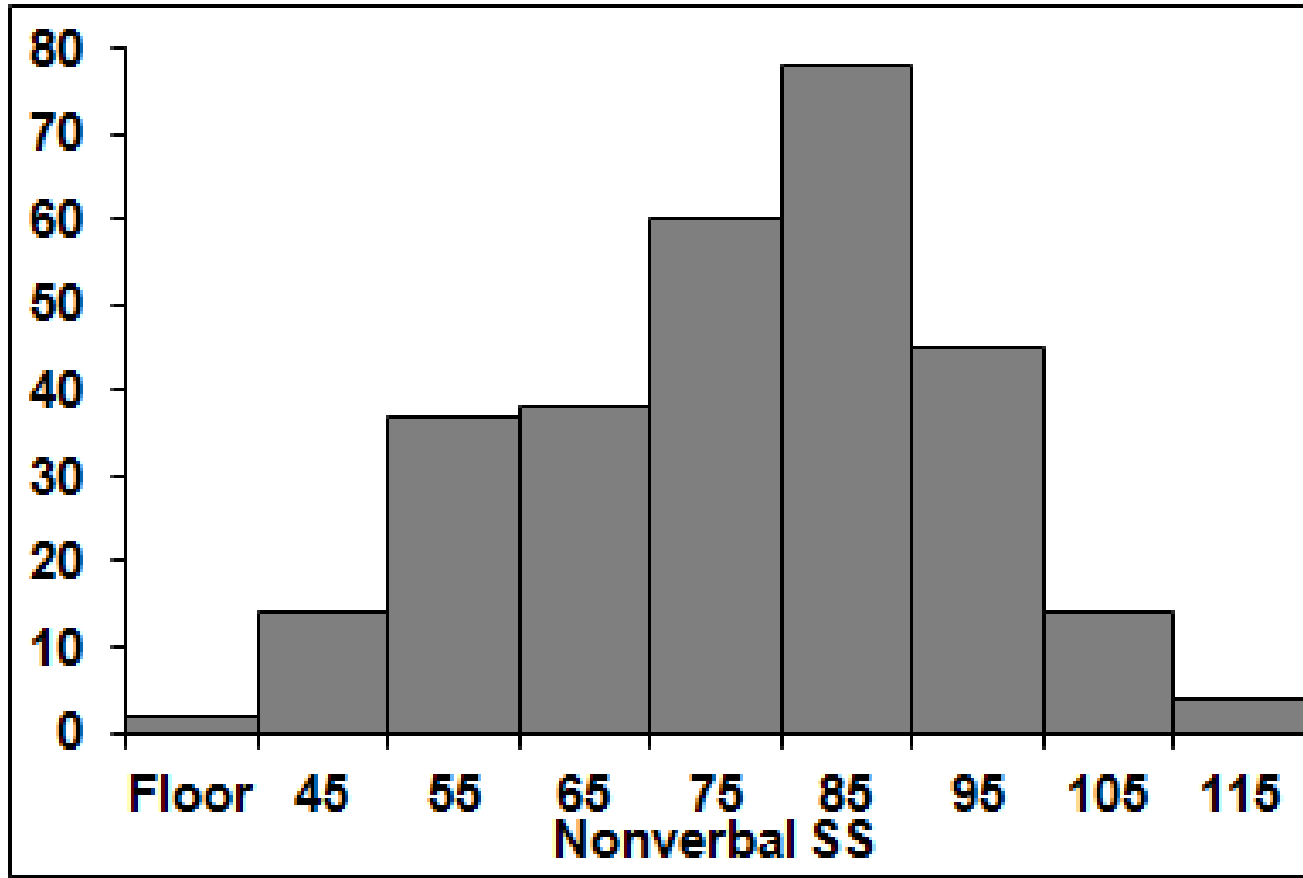
Verbal Standard Score (Ages 4 – 17 years, N = 292)



Mean: 76.57, SD: 14.81, 40 – 112

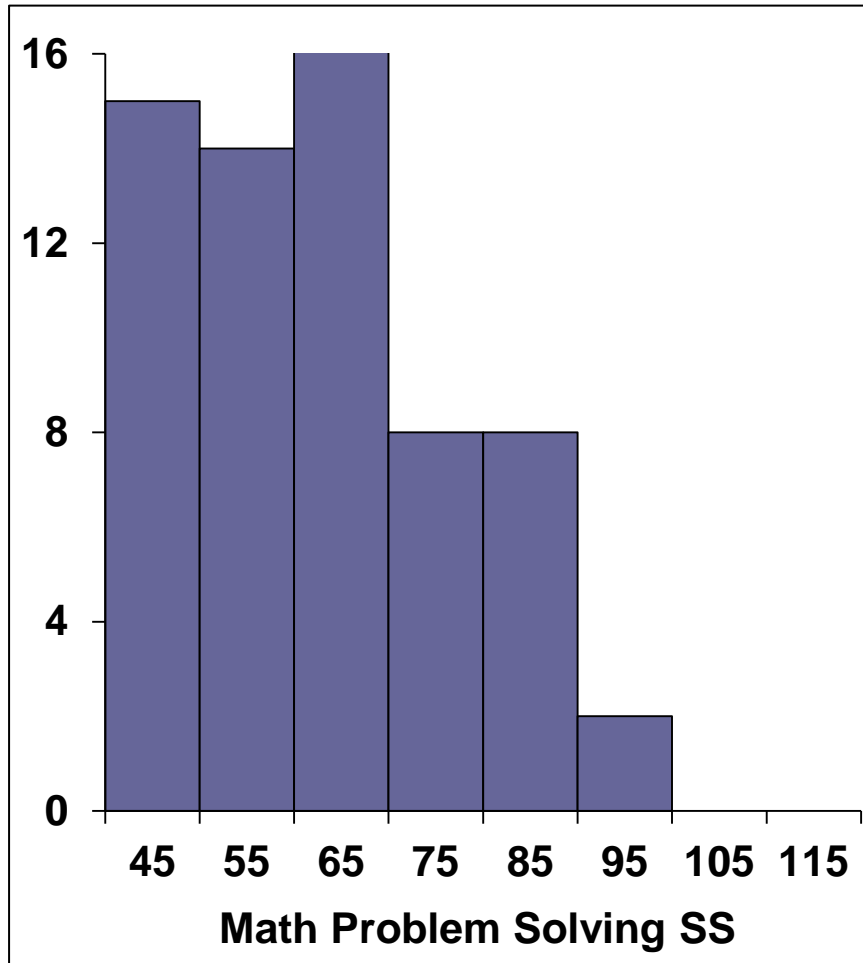
Kaufman Brief Intelligence Test – 2

Nonverbal Standard Score (Ages 4 – 17 years, N = 292)

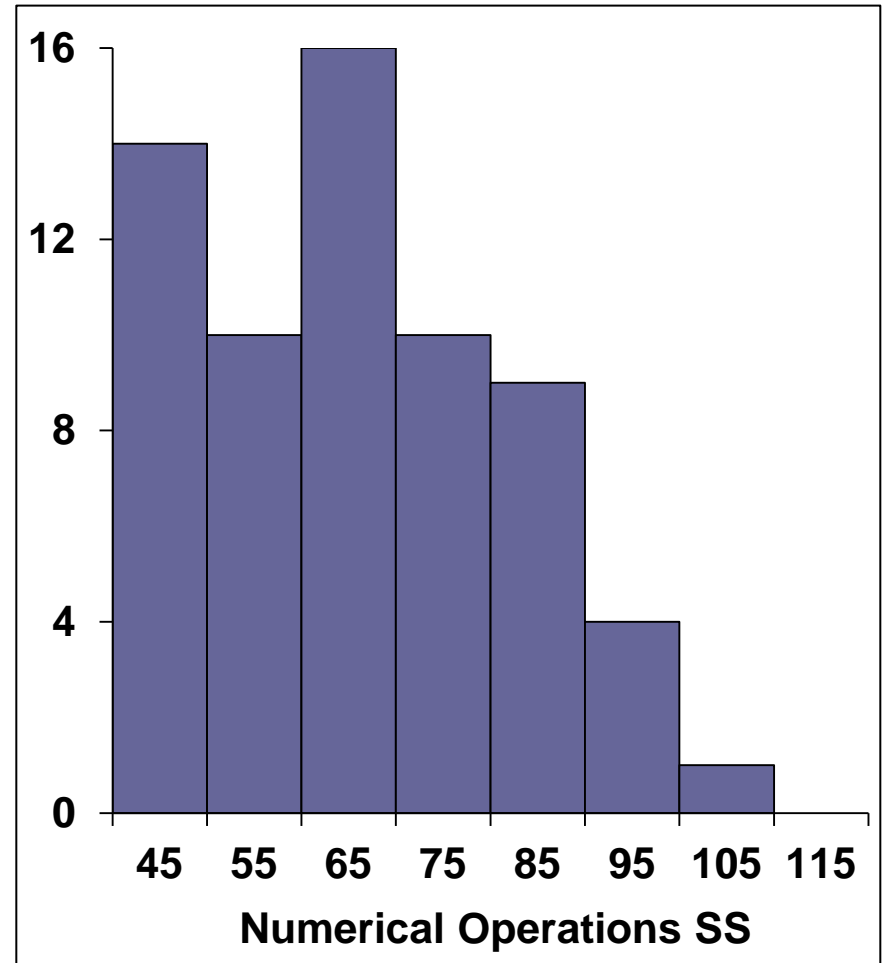


Mean: 76.78, SD: 15.82, Range: 40 – 112

WIAT-III Math Standard Scores (Ages 9 – 17 Years, N = 74)

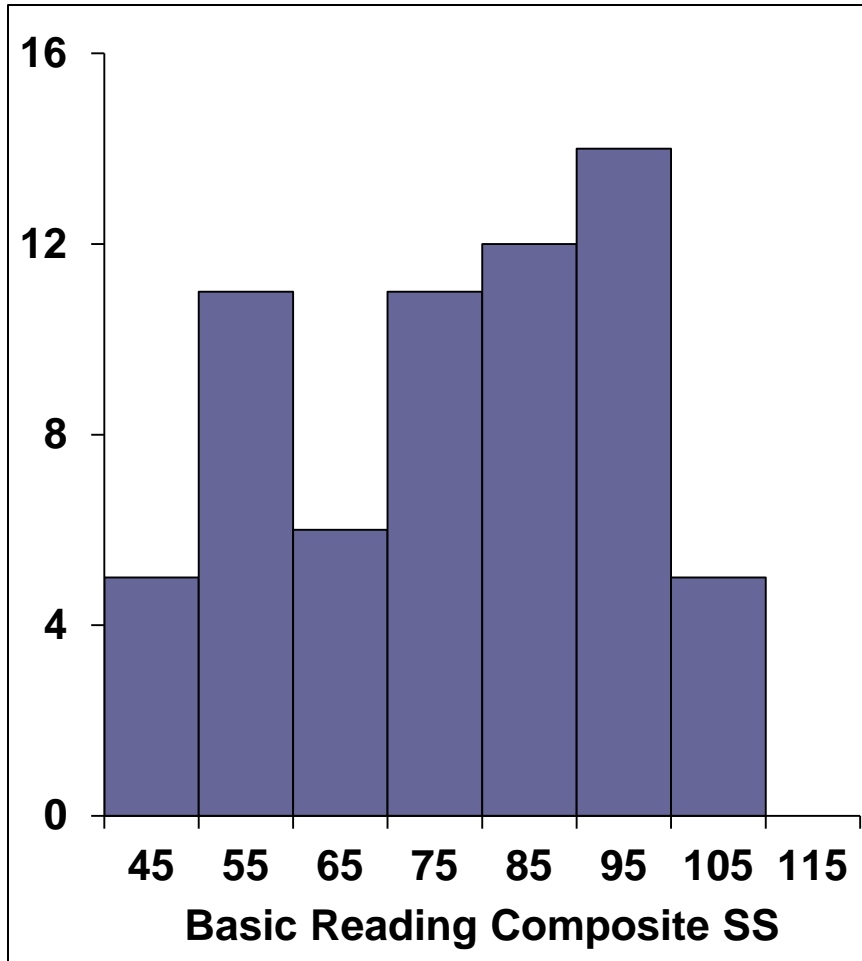


Mean: 60.15, SD: 14.92, Range: 40 – 95

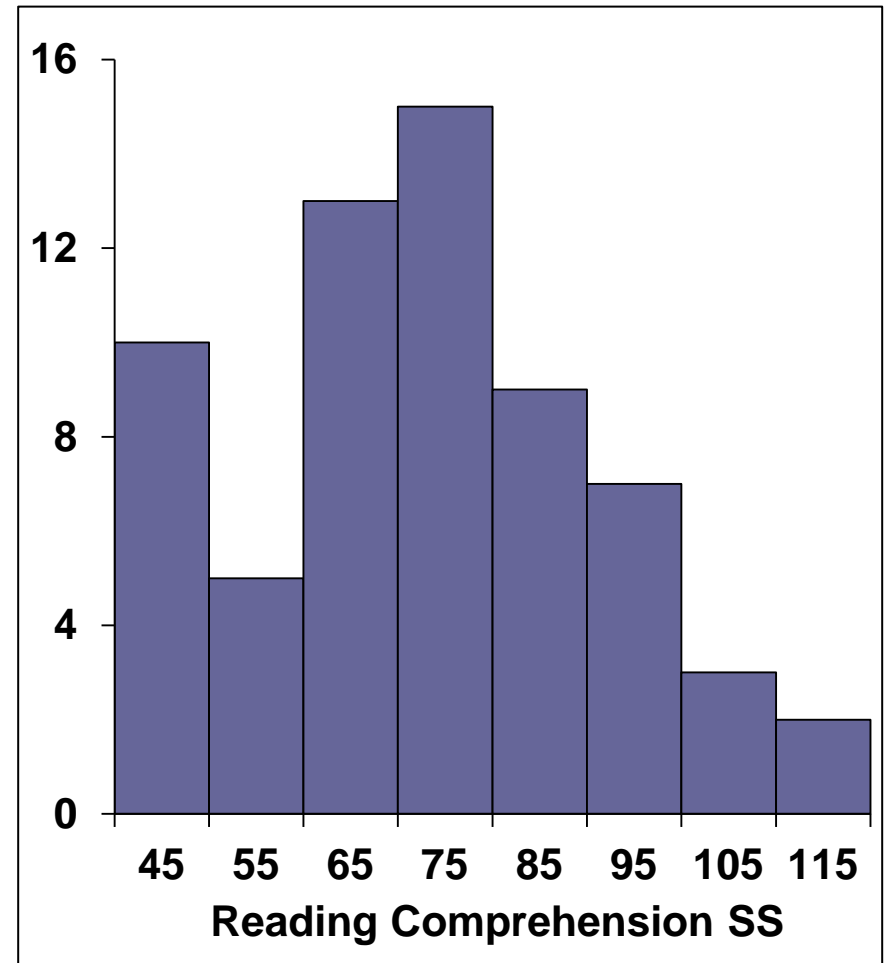


M: 63.61, SD: 15.29, 40 – 100

WIAT-III Reading Standard Scores (Ages 9 – 17 Years, N = 74)



Mean: 75.89, SD: 17.52, Range: 40 – 109



Mean: 70.64, SD: 18.89, Range: 40 – 110

WIAT-III Basic Reading Composite & Reading Comprehension Standard Scores

